

IMPULSE

GETTING STARTED GUIDE

CONTENTS

Introduction	1
Impulse Features.....	2
Box Contents	2
About this Guide	2
Minimum System Requirements	2
Connecting the Impulse.....	3
Impulse Basic Operation.....	3
Top Panel.....	3-4
Back Panel	5
Installation and Setup	6
Using Impulse with your Music Software.....	7
Ableton Live Lite	8
Registration and Support.....	8

Introduction

Welcome to the Novation Impulse Professional USB-MIDI Keyboard!

Impulse is a MIDI keyboard with a powerful DAW and plug-in control surface. It has a precision semi-weighted keyboard with aftertouch as well as pitch and modulation wheels. Fader/s, encoders and buttons provide full mixer and plug-in control over all major DAWs, including clip and scene launch in Ableton Live. The 8 drum pads can be used to trigger notes, perform beat rolls, change the rhythm of arpeggios (in realtime!) and launch clips. Transport control buttons allow you to navigate your music software. Impulse comes with a brand new version of Novation's Automap control software which gives you instant control of your plug-in effects and instruments in most music software.

We suggest you take the time to work through the steps in this guide for a simple trouble-free setup.



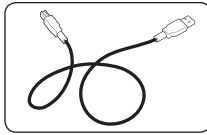
Impulse Features

- 25, 49 or 61 note high quality piano-style semi-weighted keyboards
- 8 rotary encoders
- 9 faders (49/61 note versions)
- 8 large tri-colour backlit trigger pads
- Custom LCD with direct feedback from DAW
- Transport controls
- Arpeggiator with pad-based rhythm editor
- Brand new Automap software (v4.0) - far easier to install and use - seamless Plug-in and Mixer control
- Buttons with QWERTY support via Automap (49/61 note versions)
- Clip Launch mode in Ableton Live
- Roll mode on drum pads
- Brand new look and feel

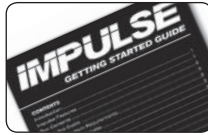
Box Contents



Novation Impulse



USB Cable



Getting Started Guide

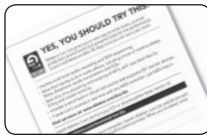


Impulse Installer DVD-ROM



Bass Station

Registration Card



Ableton Live Lite

Registration Card

About this Guide

This guide is designed to help you through the basic steps in setting up your Impulse for the first time and getting started with basic music software control.

Minimum System Requirements

Impulse and Automap are designed to work with Mac OS X and Windows. At the time of writing the supported operating systems are:

MAC - OS X 10.7 Lion and 10.6 Snow Leopard (32 and 64 bit)

WINDOWS - Windows 7 (64 & 32 bit), Windows Vista (32 bit only), or Windows XP SP3 (32bit only)

USB class compliant (no driver necessary for basic use). Automap installation includes a driver for advanced functionality

Connecting the Impulse



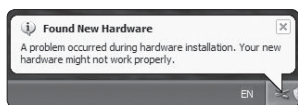
Plug the square end of the supplied USB cable into the port on the back of your Impulse. Plug the flat end of the USB cable into a free port on your computer. We recommend you plug the Impulse into the computer directly rather than via a USB hub.

MAC - On Mac OS X the keyboard will simply connect.

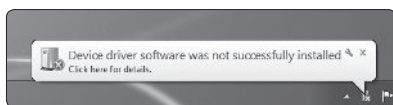


WINDOWS - On Windows you may be prompted that new hardware has been found.

On XP, Windows will display the 'Found New Hardware' Wizard. For each prompt answer '**NO**' to connecting to Windows Update and '**YES**' to install software automatically. This may occur more than once.



XP

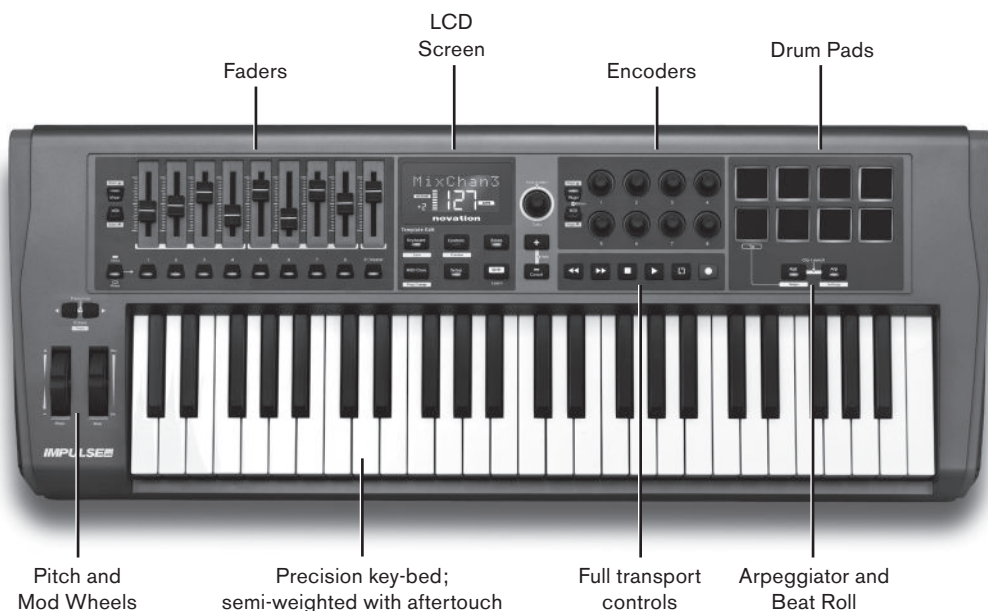


WIN7

Ignore any Windows hardware failure messages as the Automap installer will correct this.

Impulse Basic Operation

Top Panel



When connected the Impulse will power up and work right away as a MIDI keyboard. The keys will send MIDI note messages and the controls will send MIDI control messages. Pads will send notes when tapped and aftertouch when pressed.



Now that you're connected you should see the screen is on along with some of the LEDs on the keyboard. Press the + and - buttons together to enter Help mode. As you press, slide or turn the controls the display will tell you a little about each of them:



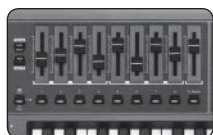
KEY-BED

The Impulse has 25, 49 or 61 keys (2, 4 or 5 octaves). The keys are semi-weighted for a more realistic feel. The Impulse has aftertouch which allows you to apply pressure to keys after pressing them down for additional control over a sound if the sound supports this.



PITCH & MODULATION WHEEL

The pitch bend wheel allows you to alter the pitch of a sound upwards or downwards. The modulation wheel adds a vibrato or other effect to the sound.



FADER/S

The fader/s can be used to control the mixer in your music software when used with Automap. They will also send standard MIDI control messages and can be reassigned.



ENCODERS

The encoders can be used to control plug-in parameters in your music software when used with Automap. They will also send standard MIDI control messages and can be reassigned.



TRANSPORT CONTROLS

The transport controls will control the transport section in your music software when used with Automap.



DRUM PADS

The drum pads will send MIDI notes that can be used to trigger drum sounds or samples. They also send a MIDI control message when pressure is applied.



ROLL AND ARPEGGIATOR BUTTONS

These buttons control the Pad Roll and Arpeggiator functions on the Impulse. More detail on these can be found in the User Guide on the DVD.



MIXER AND PLUG-IN BUTTONS

The Mixer and Plug-in buttons are for switching the operation of the Faders/ Encoders between MIDI mode and when working with Automap. These are available when your music software is up and running.



FUNCTION BUTTONS

These buttons are used to access deeper functionality of the Impulse. More about this is explained in the User Guide on the DVD.

Holding down the 'Shift' button will access additional features on certain buttons. The functions are shown by the labels in white boxes.

Now press the + and - buttons again to exit from Help mode.

Back Panel

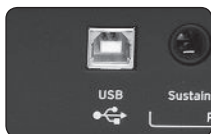


USB port

Expression and sustain pedal inputs

MIDI in and out ports

Kensington Lock port



USB PORT

For connection to a computer using the USB cable supplied, or for stand-alone use to connect to a USB power supply (not included).



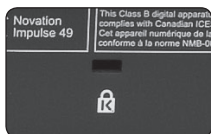
EXPRESSION AND SUSTAIN PEDAL

Standard connections for popular sustain and expression pedals.



MIDI IN AND OUT

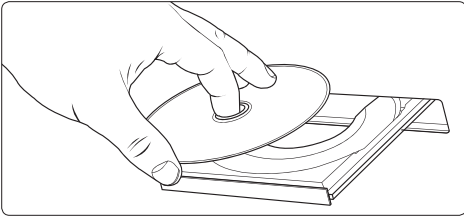
For connecting to equipment with a standard MIDI In and Out.



KENSINGTON LOCK

For connecting a Kensington Lock cable for security purposes.

Installation and Setup



Insert the Impulse Installer DVD-ROM into your computer's DVD drive

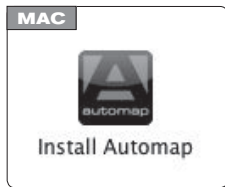


Install Ableton Live Lite

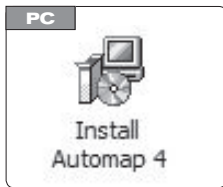


Ableton Live Lite Setup

If you wish to use the included Ableton Live Lite software then run the installer and follow the on-screen instructions

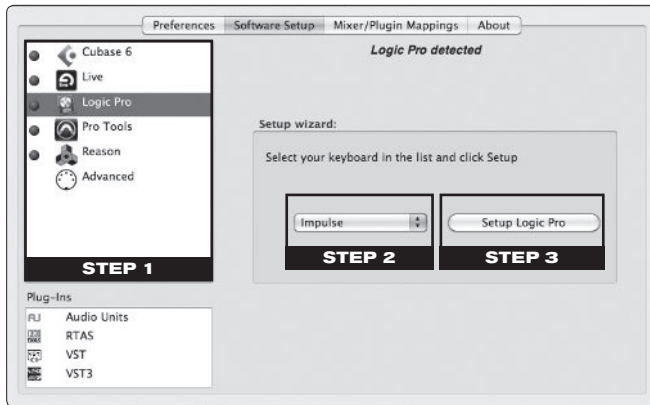


Install Automap



Install Automap 4

Run the Automap installer and follow the on-screen instructions



After installation the Automap Software Setup page will be shown:

STEP 1 Select your music software from the list on the left hand side

STEP 2 Select the Impulse from the drop-down menu on the right hand side

STEP 3 Press the Setup button to begin the setup process

Follow the steps in the on-screen setup guide that is specific to your music software.

At the end of the setup process the Impulse and Automap will be configured to work with your music software.



Note, when running, the Automap window can be accessed from the menu bar (Mac) or task bar (Windows)

Using Impulse with your Music Software

After installation and successful setup start your DAW (Digital Audio Workstation). You will see on the Impulse that the fader/s are in mixer mode and the encoders are in plug-in mode. At this point it would be good to create a new song with at least eight tracks. These can be audio, MIDI or instrument tracks.



- Open the mixer view in your DAW and move the fader/s on the Impulse - you should see the track volumes moving on screen

Note, pot-pickup is enabled by default. This means that a fader on screen will not move initially until the physical fader has been moved past the position of the on-screen fader. This is in order to avoid sudden jumps and can be switched off in Automap preferences if required.

- Select a track and load a plug-in

Note, in some DAWs you will see both the original plug-in names and Automap enabled plug-ins. Be sure to select an Automap enabled plug-in - names have (automap) at the end.

- Open the plug-in window so you can see the controls. Turn the encoders on the Impulse and you should see controls in the plug-in window move

For further information see the User Guide for Impulse and Automap on the included DVD.

Congratulations! You now have DAW control working with Impulse



Ableton Live Lite

Ableton Live has additional functionality when used with the Impulse.



Pressing the Roll and Arp buttons together engages Clip Launch mode.



The pads will change colour to represent the status of the first eight tracks of clips in Live on the currently selected scene:

GREEN is clip playing

AMBER is clip loaded

RED is clip selected for record

Tapping an amber or green pad will start playback.



When in Session View the FF and REW transport buttons will move scene selection up and down.

Pressing the LOOP button will trigger the selected scene.

In Arrangement View the buttons revert to transport functions.

For further information see the User Guide on the DVD.

Registration and Support

Thanks for choosing the Novation Impulse.

Please register your Impulse online at:

www.novationmusic.com/support/register_product/

For customer support, please contact us online:

www.novationmusic.com/support

novation[®]

Novation is a registered trade mark of Focusrite Audio Engineering Limited. Impulse is a trade mark of Focusrite Audio Engineering Limited. 2011 © Focusrite Audio Engineering Limited. All rights reserved.